



BX Dual Flapper Check Valve

Used in conjunction with a variety of lock mandrels to hold differential pressure from below

Designed to be installed or retrieved in a single run application.

The Dual Flapper Check Valve utilizes off the shelf parts, and is adaptable to a wide range of wellbore conditions and applications.

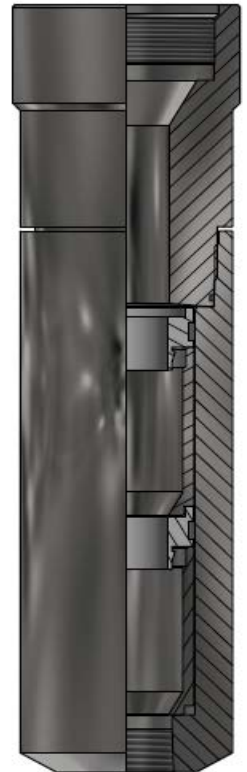
Applications:

The Dual flapper Check Valve is typically used in slickline operations where there is a requirement to maintain pressure control during injection or fishing operations. .

Able to be ran in place with the tubing string, or wireline set if the need should arise.

Size	1.78"	1.87"	2.00"	2.125"	2.188"
Over all Length (")	8.25"	8.25"	8.25"	8.25"	8.25"
Over all Length mm	209.55mm	209.55mm	209.55mm	209.55mm	209.55mm
Maximum OD (")	1.771"	1.865"	1.995"	2.115"	2.18"
Maximum OD (mm)	44.98mm	47.37mm	60.67mm	53.72mm	55.37mm
Upper Thread Conn.	1.375-14UN	1.375-14UN	1.375-14UN	1.375-14UN	1.75-12UN

Size	2.31"	2.56"	2.75"	2.81"	3.43"
Over all Length (")	8.25"	8.25"	8.25"	8.25"	8.25"
Over all Length mm	209.55mm	209.55mm	209.55mm	209.55mm	209.55mm
Maximum OD (")	2.30"	2.55"	2.74"	2.80"	3.42"
Maximum OD (mm)	58.42mm	64.77mm	69.59mm	71.12mm	86.87mm
Upper Thread Conn.	1.75-12UN	2.00-12SLB	2.25-12SLB	2.25-12SLB	2.75-12SLB



*Smaller or larger sizes available upon request, as well as custom materials
Contact your Brio-tech representative for more information

BRIO-TECH PRESSURE CONTROLS - 3904 – 53RD AVENUE NW, EDMONTON, ALBERTA, CANADA T6B 3N7
(780) 670-2020

PLEASE STATE PART DESCRIPTION AND SIZE WHEN ORDERING

