



# BX Surface Set / Release Tool

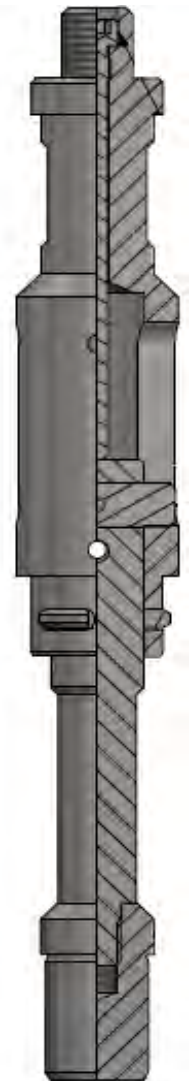
Used to set and retrieve Halliburton™ style mechanical type "X" / "R" locks at surface from corresponding profile nipples.

## Applications:

Used when there is a requirement to set a lock mandrel in a profile nipple at surface, this could be required for pressuring test a bottom hole assembly before being ran into the wellbore, used to set wireline retrievable float valves, or for securing a barrier for snubbing operations.

This tool can be used to install and retrieve the appropriate lock mandrels at surface by simply removing or installing the locator cap.

Size	1.87	2.31	2.75	2.81	3.81
Fishneck OD (")	1.375"	1.375"	1.75"	1.75"	2.31"
Fishneck OD (mm)	34.93mm	34.93mm	44.45mm	44.45mm	58.67mm
Maximum OD (")	1.75"	2.18"	2.71"	2.71"	3.71"
Maximum OD (mm)	44.45mm	55.37mm	68.83mm	68.83mm	94.23mm
Upper Thread Conn.	0.938-10 UN	0.938-10 UN	1.062-10UN	1.062-10UN	1.062-10UN



BRIO-TECH PRESSURE CONTROLS

\*Smaller or larger sizes available upon request, as well as custom materials  
Contact your Brio-Tech representative for more information

\*\*This tool is not designed to be ran into subsurface conditions\*\*

BRIO-TECH PRESSURE CONTROLS - 3904 – 53RD AVENUE NW, EDMONTON, ALBERTA, CANADA T6B 3N7  
(780) 670-2020

PLEASE STATE PART DESCRIPTION AND SIZE WHEN ORDERING

