



# C1 - Running Tool

The C1 running tool is used for running and setting the various types of Baker style lock mandrels or bypass blanking plugs.

The C1 running tool can typically be used for any of the baker style equipment that utilizes an external fishing neck.

The C1 running tool utilizes no-go rings to prevent the running tool from passing through profiles with the pre-determined sub surface tools attached or pinned to the running tool.

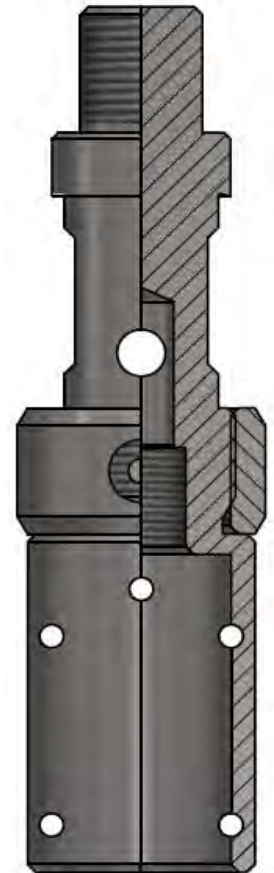
## Applications:

The C1 running tool can be used to run or set and of the Baker style S/W/Z lock mandrels along with the desired equalizing assemblies.

The C1 running tool can be used to set bottom hole chokes, bypass equalizing plugs, safety valves, or regulators

Size	1.50"	2.00"	2.50"	3.50"
Fishneck OD (")	1.188"	1.375"	1.75"	1.75"
Fishneck OD (mm)	34.93mm	34.93mm	44.45mm	44.45mm
Maximum OD (")	1.75"	2.18"	2.71"	2.71"
Maximum OD (mm)	44.45mm	55.37mm	68.83mm	68.83mm
Upper Thread Conn.	0.938-10 UN	0.938-10 UN	1.062-10UN	1.062-10UN

ACCESSORY	RUNNING TOOL	LOCATING RING
SIZE	SIZE	OD
1.18	1.66"	1.219
1.25		1.281
1.43	1.900-2.062"	1.468
1.5		1.52
1.56		1.593
1.62		1.656
1.78	2.375"	1.807
1.81		1.843
1.87		1.906
2.25	2.875"	2.281
2.31		2.343
2.75	3.50"	2.781
2.81		2.843



BRIO-TECH PRESSURE CONTROLS - 3904 – 53RD AVENUE NW, EDMONTON, ALBERTA, CANADA T6B 3N7  
(780) 670-2020

PLEASE STATE PART DESCRIPTION AND SIZE WHEN ORDERING

