

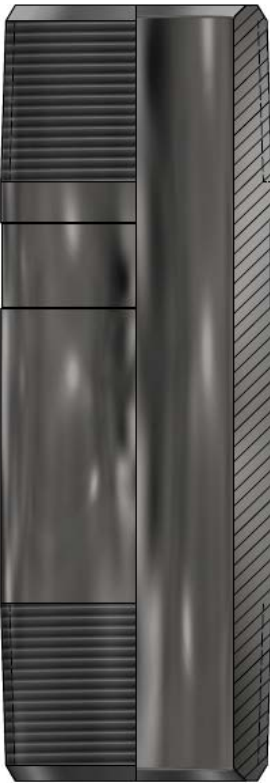
Landing Nipple - WJ

The Brio-Tech WJ landing nipple is a downhole slick sealbore nipples that accepts WJ standing valves.

Applications:

The Brio-Tech WJ nipple is typically ran below electric submersable pumps with the intention of maintaining a column of fluid in the tubing string should the downhole pump fail, this mitigates the chances of the fluid in the wellbore travelling down through the pump and causing potential damage.

Standard Information	2.375	2.875	3.500
Tubing ID "	1.991"	2.441"	2.992"
Tubing ID - mm	50.57mm	62.00mm	76.00mm
Tubing Weight lbs/ft	4.6 lbs/ft	6.4 lbs/ft	10.2 lbs/ft
Tubing weight Kg/M	6.66kg/m	9.26kg/m	14.77kg/m
Max OD"	2.730"	3.094"	3.750"
Max OD - mm	69.34 mm	78.59 mm	95.25 mm
Seal Bore ID	1.813"	2.250"	2.75"
Seal Bore ID	46.05 mm	57.15 mm	69.85mm



Contact your Brio-tech representative for more information

BRIO-TECH PRESSURE CONTROLS - 3904 – 53RD AVENUE NW, EDMONTON, ALBERTA, CANADA T6B 3N7
(780) 670-2020

PLEASE STATE PART DESCRIPTION AND SIZE WHEN ORDERING

