



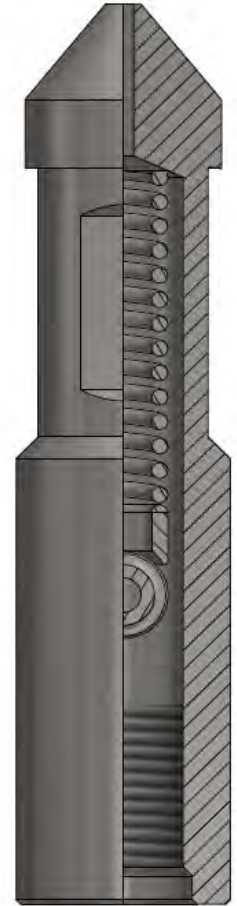
Rope Socket - Thimble

Thimble type rope sockets are used to attached or secure slickline or wireline to the toolstring to allow for deployment of sub-surface tools and equipment.
 Line is attached to the rope socket by tying a "KNOT" around the thimble.
 Rope sockets come with fish necks so they can be retrieved with conventional tools should the wireline or slickline be broken or cut.

Brio-Tech PRESSURE CONTROLS

Size	0.75"	1.00"	1.25"	1.50"	1.75"
Fishneck (")	0.75"	1.00"	1.187"	1.375"	1.75"
Fishneck (mm)	19.05mm	25.4mm	30.14mm	34.93mm	44.45mm
Maximum OD (")	0.75"	1.00"	1.25"	1.50"	1.75"
Maximum OD (mm)	19.05mm	25.4mm	31.75mm	25.4mm	44.45mm
Lower Thread Conn.	0.50-11 UNC	0.625-13UNC	0.938-10 UN	1.062-10 UN	1.062-10 UN

Size	1.875"	2.125"	2.50"	2.75"
Fishneck (")	1.75"	1.75"	2.31"	2.31"
Fishneck (mm)	44.45mm	44.45mm	58.67mm	58.67mm
Maximum OD (")	1.875"	2.125"	2.50"	2.75"
Maximum OD (mm)	47.62mm	53.98mm	63.50mm	69.85mm
Lower Thread Conn.	1.062-10 UN	1.062-10 UN	1.062-10 UN	1.062-10 UN



*Alternate thread configurations and sizes available upon request
 Contact your Brio-Tech representative for more information

BRIO-TECH PRESSURE CONTROLS - 3904 – 53RD AVENUE NW, EDMONTON, ALBERTA, CANADA T6B 3N7
 (780) 670-2020

PLEASE STATE PART DESCRIPTION AND SIZE WHEN ORDERING

