



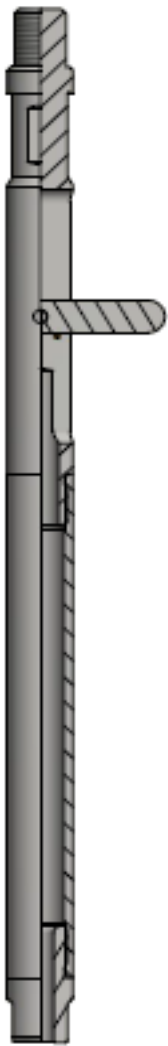
Tubing End Locator

The Tubing Ed Locator is used to find the bottom or end of a tubing string in the wellbore.

Applications:

User to find the bottom of the tubing string in wells where there is a possibility of the tubing depth being compromised due to parted or severed pipe, incorrect tallies,. The tubing end locator can also have a sample barrel attached to retrieve a sample of material from the bottom of the well bore after locating tubing end.

Size	2.375"	2.875"	3.50"	4.50"
Upper Thread Conn.	0.938-10 UN	0.938-10 UN	1.062-10 UN	1.062-10 UN
Fishneck (")	1.375"	1.375"	1.375"	2.31"
Fishneck (mm)	34.93mm	34.93mm	44.45mm	58.67mm
Maximum OD (")	2.375"	2.875"	3.50"	4.75"
Maximum OD (mm)	60.3 mm	73 mm	88.9 mm	120.60 mm



*Alternate thread configurations, sizes, and lengths available upon request
Contact your Brio-Tech representative for more information



BRIO-TECH PRESSURE CONTROLS - 3904 – 53RD AVENUE NW, EDMONTON, ALBERTA, CANADA T6B 3N7
(780) 670-2020

PLEASE STATE PART DESCRIPTION AND SIZE WHEN ORDERING

