

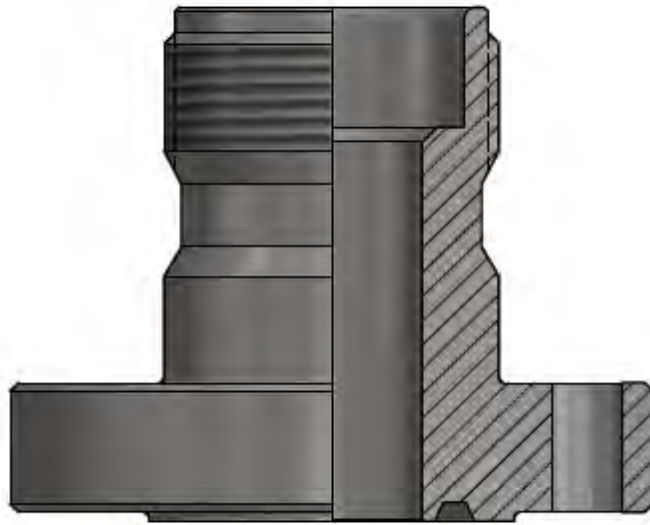
Wellhead Flange

The wellhead flange is used to attached wireline or slickline pressure control equipment to a wellhead .

Wellhead flanges come in a variety of flange configurations as a well as a variety of thread configurations depending on the type and size of pressure control equipment being used.

Applications:

Wellhead flanges are typically utilized in high pressure or H₂S conditions where a typical thread wellhead swage would not be acceptable.



*Smaller or larger sizes available upon request, as well as custom materials
Contact your Brio-Tech representative for more information

BRIO-TECH PRESSURE CONTROLS - 3904 – 53RD AVENUE NW, EDMONTON, ALBERTA, CANADA T6B 3N7
(780) 670-2020

PLEASE STATE PART DESCRIPTION AND SIZE WHEN ORDERING

